

# MAEDA MC815C



Crane Capacity

**3,09 t x 2,4 m**

Max. lifting height (on the ground)

**19,6 m/25,5 m** (fly jib)

Max. working radius

**18,8 m x 0,34 t**

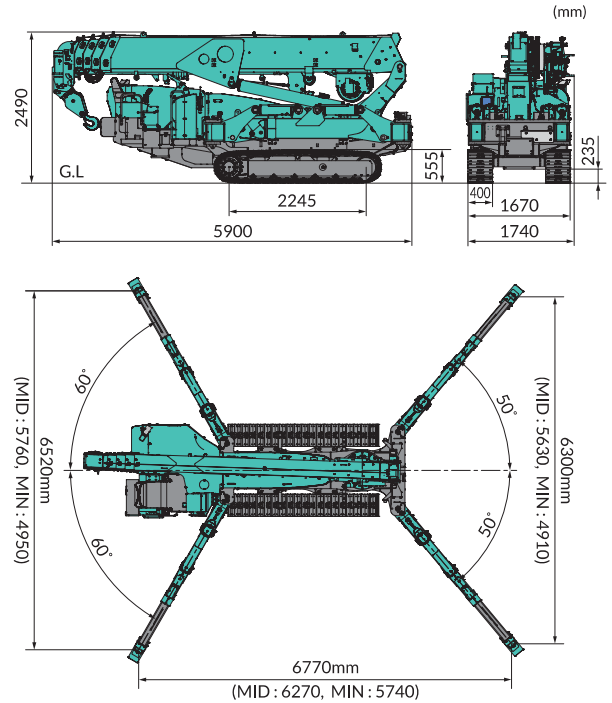
Max. lifting height (underground)

**-21,0 m** (6 falls)

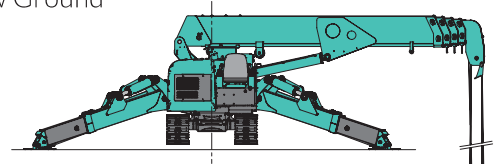
Pick & Carry capacity

**1,0 t**

Dimensions



Max. Reach Below Ground



Working Range Chart

